

Floating Crane Transshipper Unit

PRINCIPAL PARTICULARS:	
Flag	Panama
Year Built	2011
Place Built	PT Perkasa Melati Batam
Length Overall	56.4m
Length P.P	54.1m
Breadth Moulded	24m
Depth Moulded	4.73m
Design Draft	2.693m
IMO No.	8655825
Official No.	398511

CAPACITIES:	
Gross Tonnage	2148 UMS
Net Tonnage	644 UMS
Diesel Oil	275 m3
Water Ballast Tank	745 m3
Fresh Water	236 m3

CLASSIFICATION:
BV- I+ Hull + Mach - Pontoon Crane - Assisted Propulsion-Coastal Area + ALM

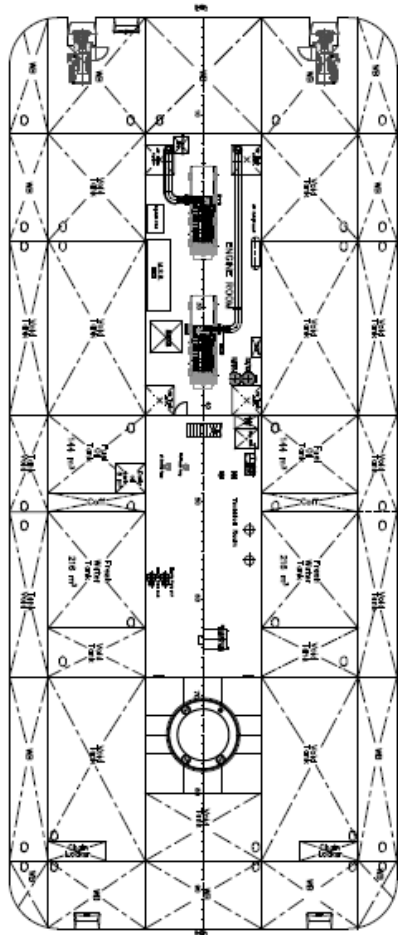
MACHINERY & DECK EQUIPMENT:	
Main Engines	2 X CAT 3516 DITA 2000KVA
Propellers	SCHOTTEL NAVIGATOR 330
Generators	1 X CAT C4.4

CRANE:	
Deck Crane	Grab Crane SWL 32
Luffing stroke speed	22 sec
Hoisting / Closing speed (full grab)	105 m/min
Slewing speed	1.45 rpm
Working Radius max/min	40/16 m
Max hoisting height	30 m

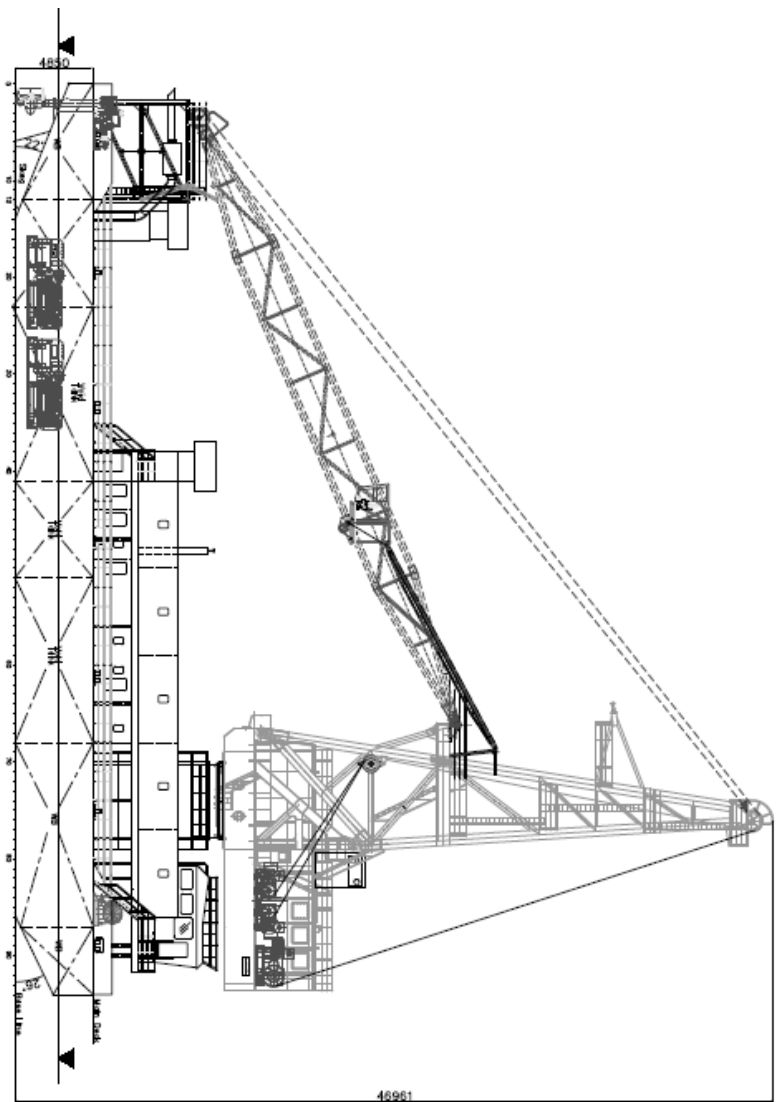
ACCOMMODATION:	
One Man Cabin	4
Two Man Cabin	2
Three Man Cabin	-
Four Man Cabin	7
Five Man Cabin	-
Maximum Total Complement	32

Particulars given here are believed to be correct but not guaranteed. Owners reserve the rights to amend specifications without notification.

VIEW BEHIND MAINDECK

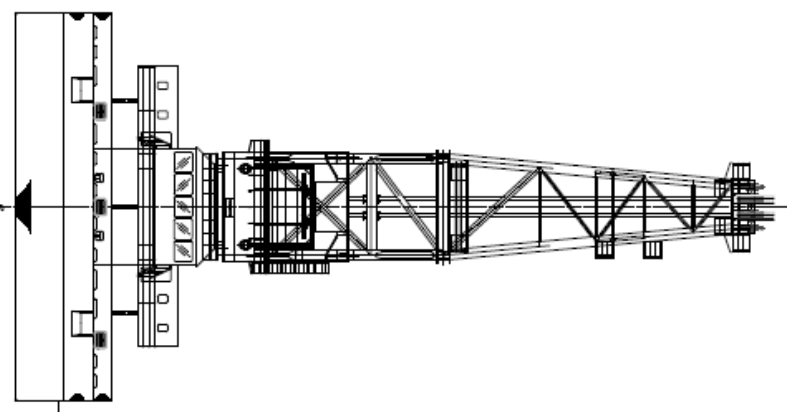


SIDE VIEW SE



46961

END VIEW



PRINCIPAL PARTICULAR

LENGTH O.A.	56.400 MTR
BEAM M.L.C.	24.200 MTR
DEPTH M.L.C.	4.750 MTR
DISPLT	2,163 MTS
SAFE WORKING LIMIT	3200 KGS
MAXIMUM WORKING RADIUS	48.000 MTR
MINIMUM WORKING RADIUS	16.000 MTR
MINIMUM HEIGHT	30.200 MTR
MINIMUM HECH	-10.200 MTR
TOWING SPEED	0-48 M/MIN
TOWING STROKE at constant speed	2280C
SLEWING SPEED	0-17.44 RPM
PROPULSION SPEED	AST 4 KNOTS
HOISTING/CLOSING SPEED-ALL GRAB	0-120 M/MIN
HOISTING/CLOSING SPEED-ELECTY GRAB	0-120 M/MIN
POWER PLANT	2X 1650 KW
PROPULSION	2X538 KW
ACCOMODATION FOR	32 PERSONS

Particulars given here are believed to be correct but not guaranteed. Owners reserve the rights to amend specifications without notification.